

SA550-2X90 smeg 90cm deluxe slim jim telescopic rangehood



| | |
|------------------|--|
| finish | all satin stainless steel fascia rail and under-carriage |
| installation | built into overhead cabinetry |
| motor | 250 watt centrifugal, twin impellers, double air uptake |
| air capacity | 800m ³ /hr net |
| air extraction | exhaust direct to atmosphere or recirculate to kitchen, 150mm diameter (6") ducting required NB: ducting is not supplied |
| speed | four separate illuminated buttons — automatic presetting |
| noise rating | 41–58 dBA |
| illumination | two 20 watt halogen, rear mounted |
| filtration | two 4-ply stainless steel/aluminium — removable and washable |
| delay stop | selectable 5-minute delay stop for fan and lights |
| cleaning prompts | automatic, LED, visual <ul style="list-style-type: none"> • 30 hours for grease filters — wash • 120 hours for charcoal filters — change |
| charcoal filters | optional, purchasable accessory when recirculating, code for pair 08999801 |
| warranty | two years parts and labour |

APPLICATION

Built into overhead cabinetry and concealed behind a cupboard fascia (except the distinctive stainless steel fascia rail), the SA550 deluxe slim jim is uncompromising in power, performance and quietness. It requires a minimum 330mm installation height (concealed behind cabinet fascia) to do its job properly; that is, a massive 800 cubic metres of net air movement an hour for direct ducting or recirculation.

DUCTING

Direct ducting to atmosphere ensures the maximum removal of grease/oil/particle-laden vapour plus the odours and, very importantly, the heat — resulting in a cleaner, cooler and more comfortable work area.

RECIRCULATION

When the cooking vapours cannot be ducted, simply redirect the extracted and filtered air into the kitchen via a duct pipe through the overhead cabinetry. A more frequent inspection and cleaning of the grease filter is recommended.

CHARCOAL FILTERS

These are purchasable accessories. They are replaceable. One each is clipped to either side of the centrifugal motor and are designed to absorb and diminish cooking odours. Periodic inspection is recommended before replacement. They are optionally used for recirculation only. The activated charcoal filters are not to be washed.

DUCTING MATERIAL

Smooth internal walled duct pipe lengths ensure the most efficient air movement and quieter operation. Consider either high temperature rated PVC or galvanised sheet metal piping. The flexible ducting can be ideal for a very short, tight run. The rangehood's air exit aperture is designed for 150mm diameter (6") ducting; however, a 125mm diameter (5") adaptor is supplied for optional use.

DELAY STOP

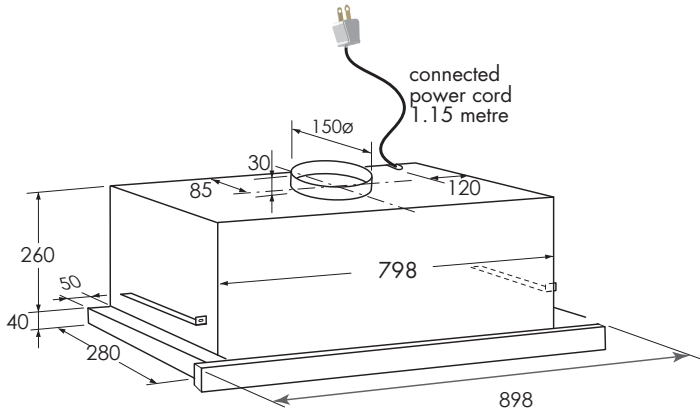
Ideally, a rangehood should run for several minutes after all cooking is ceased in order to drag through residual vapours and odours. By selecting the delay stop button at the end of the cooking, the rangehood will turn the motor off in five minutes as well as the lights if they were left on.

CLEANING PROMPTS

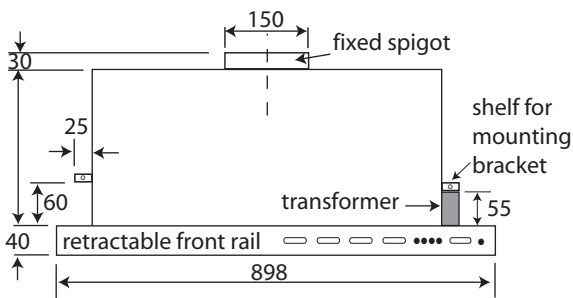
After 30 hours' use, the LED window will prompt visually to inspect the grease filters for possible cleaning. Simply use the reset button to clear the LED window.

If the rangehood has been installed for recirculation and charcoal filters have been clipped to either side of the motor, accumulative use of 120 hours will prompt a different LED warning for inspection and possible replacement of these charcoal filters.

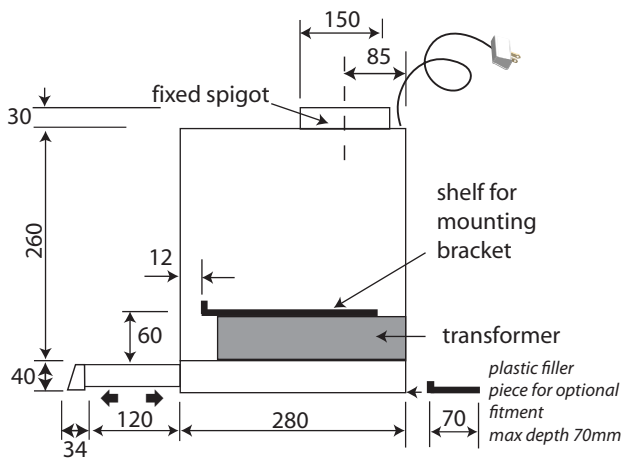
SA550-2X90 smeg 90cm deluxe slim jim telescopic rangehood



- packaged dimensions 400mm x 900mm x 300mm = 0.102m³
- gross weight 16.5kg
- net weight 14.5kg
- capacity 800m³/hr net
- air extraction duct or recirculate
NB: 150mm diameter (6") ducting required — not supplied
- electrical supply 240 volt, 50 Hz
- electrical connection 1.15 metre connected power cord with 3-pin plug suitable for standard 10 amp GPO
- wattage (motor) 250 watt centrifugal, twin impellers, double air uptake
- maximum current 1.17 amp
- lights two 20-watt halogen
- supplied
 - brackets, screws, instructions for installation, operation and maintenance
 - rear spacer for optional fitment
 - non-return butterfly valve for optional fitment
 - 2 x 4-ply stainless steel/aluminium grease filters
- optional pair activated charcoal filters for optional use when recirculation, part number 08999801 for pair

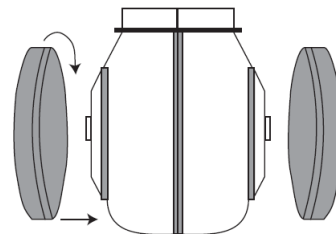


FRONT ELEVATION



SIDE ELEVATION

| SPEED | 1 | 2 | 3 | 4 |
|-------------------------------------|-----|-----|-----|-----|
| net air capacity m ³ /hr | 330 | 500 | 660 | 800 |
| pressure mm H ₂ O | 34 | 43 | 46 | 48 |
| wattage | 135 | 170 | 210 | 250 |
| noise dBA | 41 | 48 | 54 | 58 |



optional fitment of charcoal filters for recirculation installation